

The SOCOMEC ATYS range: remote control or automatic transfer switches from 40 to 6300 A

Benfeld, 25 March 2015

To meet demand for power supply availability, SOCOMEC has extended its ATYS range of transfer switches, the worldwide benchmark in integrated power switching. The product family now comprises four ranges providing different functions and allowing various switching contexts such as mains-to-mains and mains-to-genset.

Special features

The ATYS transfer switches assure both the continuity of the power supply and the safety of operators. They enable rapid transfer from one power source to another depending on their availability. The selection of the power source can be done in four different ways:

- via the front operation handle of the product,
- remotely, using the inputs for position control commands,
- automatically, depending on the availability of sources.
- via Ethernet or RS485 communication modules

All the ATYS are factory assembled for safe operation (with a mechanical interlocking device for positions), minimum cabling and quick installation. Some are also fitted with a Watchdog relay that constantly monitors the product's operation, thereby securing the electrical installation.

The ATYS M range: ATYS d M, ATYS t M, ATYS g M and ATYS p M

Modular transfer switches from 40 to 160 A. Four models of ATYS M (remote and automatic) are available for most power changeover requirements.

The ATYS S range: ATYS S, ATYS d S

Remotely operated transfer switches from 40 to 125 A, designed specifically for gensets rated up to 90 kVA. The ATYS S range offers a wide choice of AC and DC power ratings to meet most genset requirements (12 VDC, 24/48 VDC and 230 VAC +/- 30%).

The ATYS range: ATYS r, ATYS d, ATYS t, ATYS g, ATYS p

Automatic or remotely operated transfer switches from 125 to 3200 A. This range includes many features and accessories for specific application requirements.

The ATYS H range: ATYS d H

Remotely operated transfer switches from 4000 to 6300 A. They offer a fully automatic solution when associated with C30 or C40 controllers.

Advantages

Automatic transfer (ATSE) or remote-controlled transfer (RTSE)?

ATSE equipment differs from RTSE equipment in that they incorporate automatic control. This means that such products monitor source availability themselves, starting up the genset if needed and automatically switching to the available source. On the other hand, RTSE equipment requires the presence of an external control system to provide them with switching commands.

Our remote-controlled transfer (RTSE) solutions:

- ATYS r and ATYS S: for all types of changeover switching, transfer, simple 230 V power supply, suitable for critical buildings.
- ATYS d, ATYS d S, ATYS d M and ATYS d H: for all types of changeover switching, dual 2x230 V power supply, suitable for critical buildings.

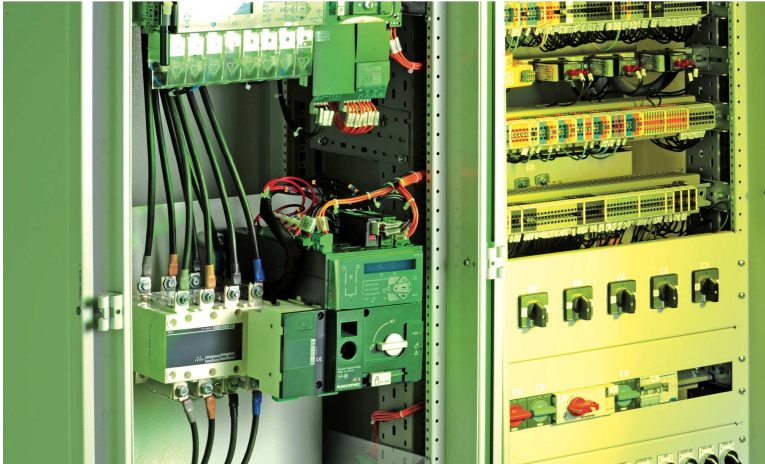
Our automatic transfer (ATSE) solutions:

- ATYS t and ATYS t M: mains-to-mains changeover switching, dual 2x230 V power supply, LED display of positions I-0-II, voltages, frequency and phase rotation control, automatic configuration.
- ATYS g and ATYS g M: mains-to-genset changeover switching, dual 2x230 V power supply, LED display positions I-0-II, voltages, frequency and phase rotation control, automatic configuration and genset on-load and off-load test.
- ATYS p and ATYS p M: with their mains-to-genset and genset-to-genset changeover functions, these models have all the functional features of the ATYS g and ATYS g M whilst additionally offering a screen for displaying all the energy management parameters (U, F, P, KWh) and programming via the optional D20 remote interface. These models can also be configured using the EASY CONFIG software and can interface with the RS485 or Ethernet communication modules (with integrated web server).

Compliance with standards

The ATYS range complies with standards IEC 60947-6-1, IEC 60947-3, GB 14048-11 and CCC and can be used in any country.

Photos



For HD version of the products photos : [click here](#)

ABOUT SOCOMEC

Founded in 1922, SOCOMEC is an industrial group with a workforce of over 3000 people around the world in 21 subsidiaries. Our core business: the availability, control and safety of low voltage electrical networks... with increased focus on our customers' power performance. In 2014, SOCOMEC posted turnover of 427 million euros.



FOR MORE INFORMATION

Press contact: Virginie GUYOT
Offer Communication Manager
Tel. : +33 (0)3 88 57 78 15
E-Mail: virginie.guyot@socomec.com

www.socomec.com