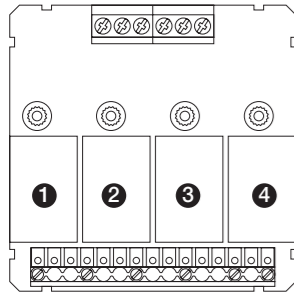


DIRIS A-20, DIRIS A-30 & DIRIS A-41



ATyS p

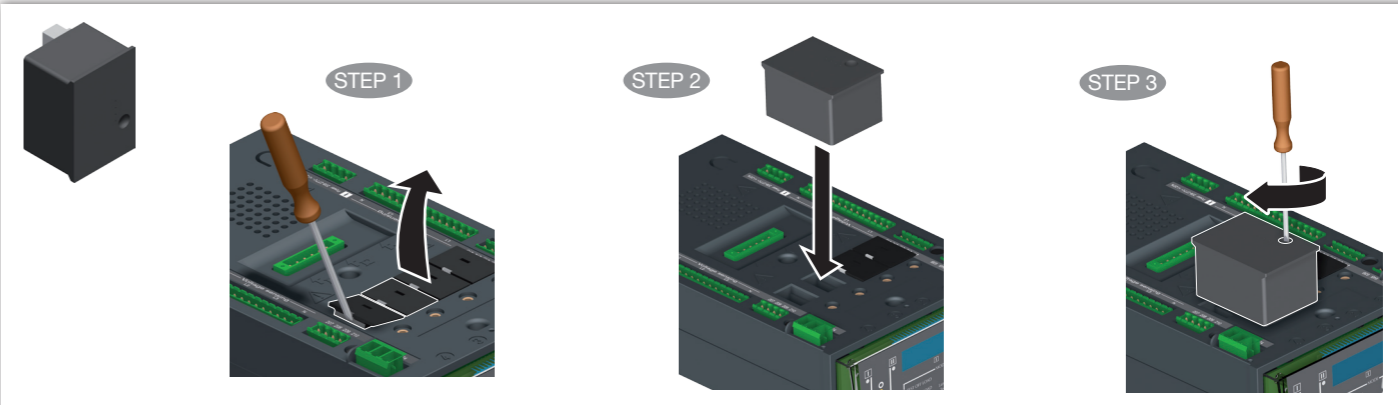
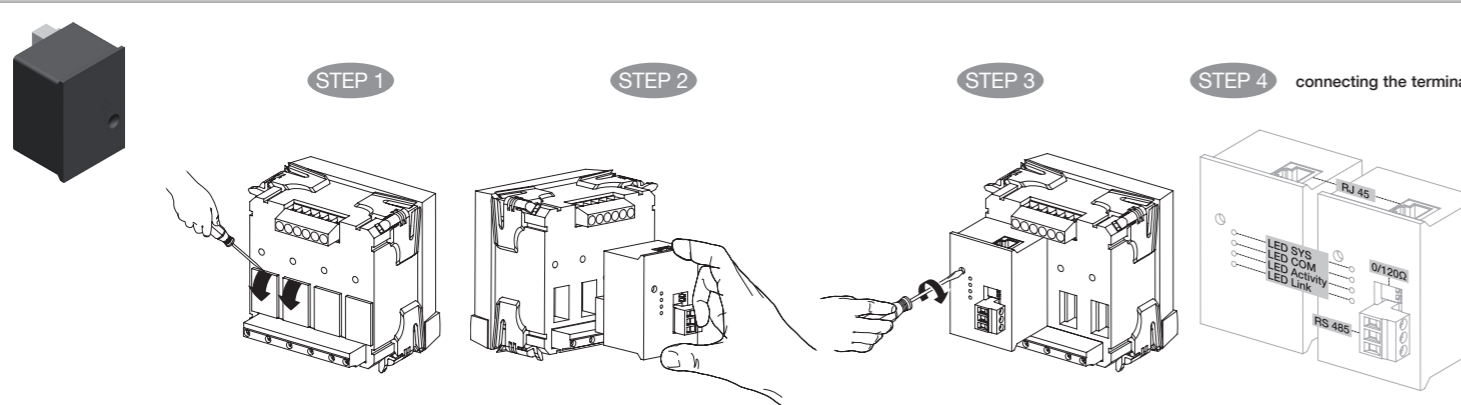
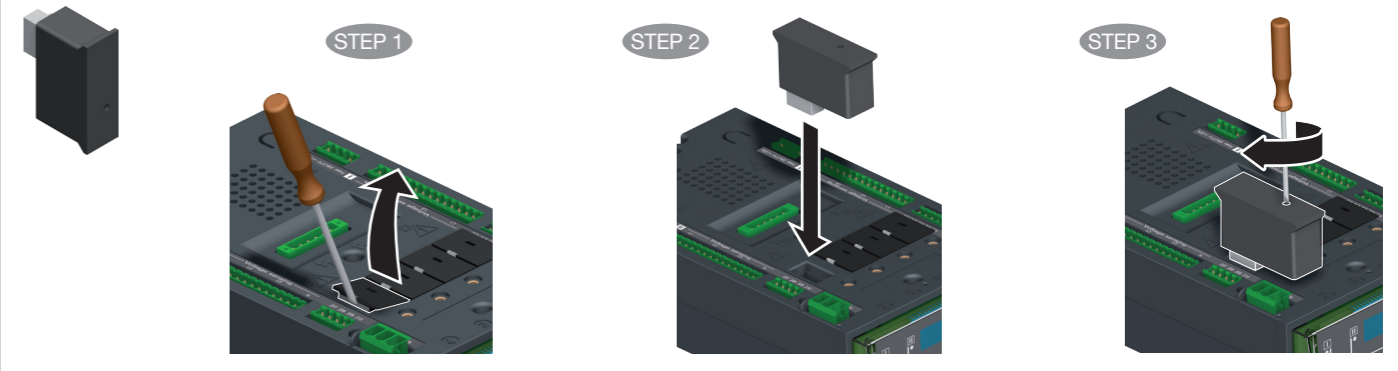
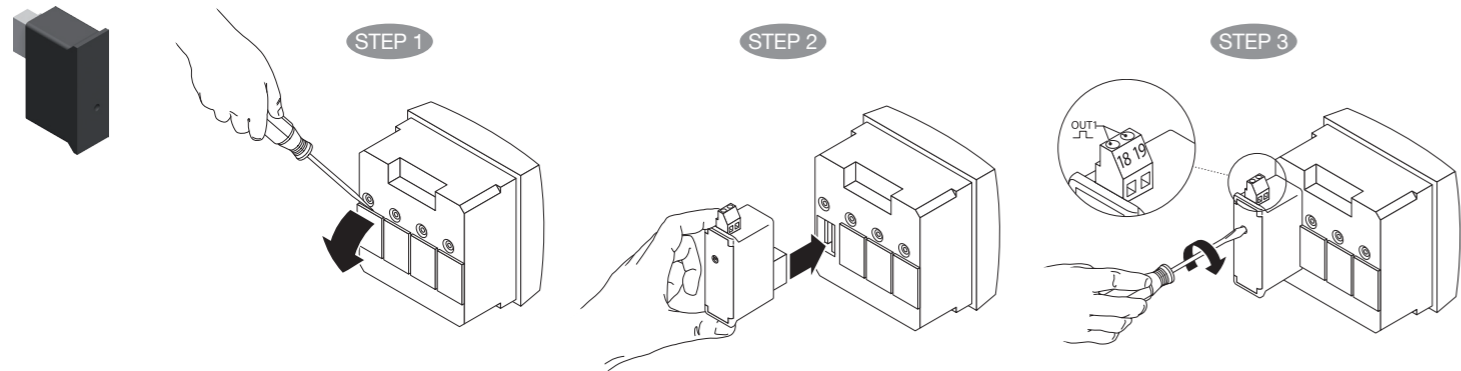


	Reference	Maximum that can be installed on device	DIRIS A-20		DIRIS A-30 / A-41			
			①	②	①	②	③	④
Pulse Module	48250090	4	-	-	x	x	x	x
RS485 Modbus A-30	48250092	1	-	-	x	x	x	x
2 out analog Module	48250093	2	-	-	x*	x*	x*	x*
2 In /2 Out digital Module	48250094	3	-	-	x	x	x	x
Memory Module	48250097	1	-	-	-	x	x	-
Pulse Module	48250080	2	x	x	-	-	-	-
RS485 Modbus A-20	48250082	1	x	x	-	-	-	-
2In/2Out digital Module	48250084	2	x	x	-	-	-	-
3In/1Out digital Module	48250083	2	x	x	-	-	-	-
Ethernet Module	48250203	1	-	-	x	-	-	x
Ethernet Module Gateway	48250204	1	-	-	x	-	-	x
Profibus Module	48250205	1	-	-	x	-	-	x

* If two modules are used they must be placed on slots 1 and 2

	Reference	Maximum that can be installed on device
Ethernet Module	48250203	1
Ethernet Module Gateway	48250204	1*
2 In /2 Out digital Module	15992001	1*
RS485 Modbus Module	48250092	1*
2 out analog Module	48250093	4
Pulse Module	48250090	1

* if using this module, other communication modules can't be installed



Has to be connected when product is not powered on

In case of use of 600V Ph-N cat III, please make sure to avoid any risk of electrical choke with the use of galvanic insulation barriers

Prior to installation of the Ethernet module please make sure that you remove both covers from in between the ATyS p electronic controller and the Ethernet module.



www.socomec.com/diris-a20



www.socomec.com/diris-a30



www.socomec.com/en/documentation-atys-p